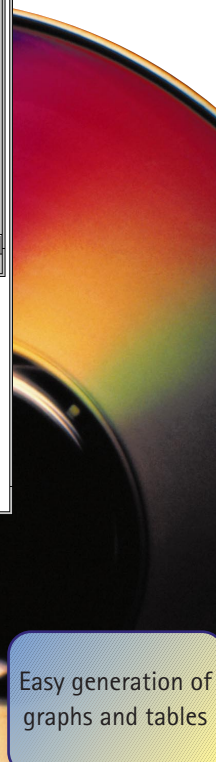
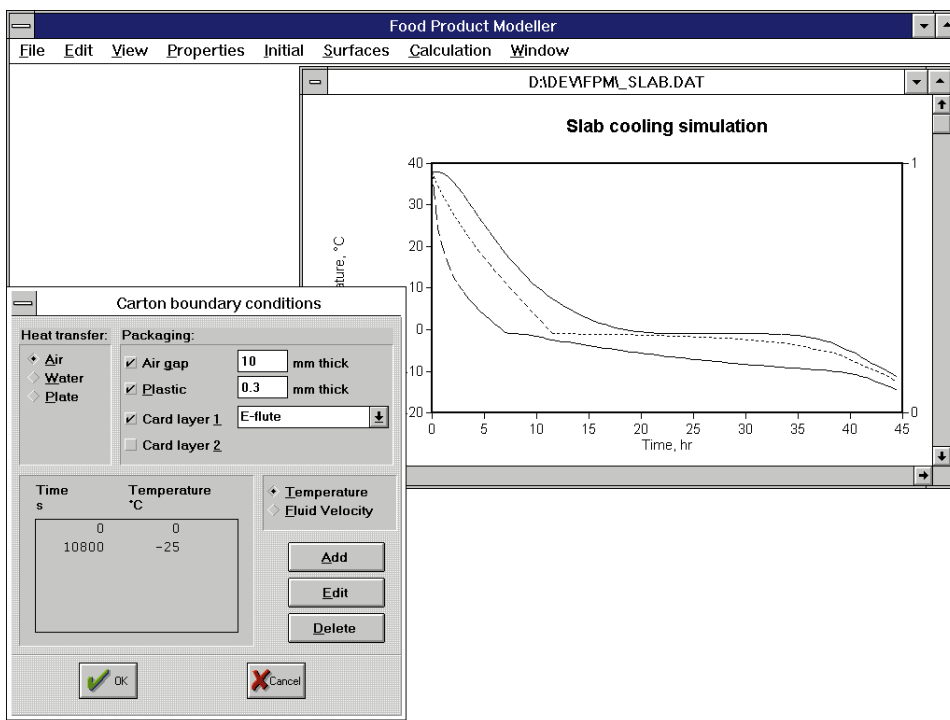


Food Product Modeller 2

Attributes:

- Calculate processing times for product chilling, freezing, thawing or heating
- Optimize air temperature or velocity for energy efficient processing
- It incorporates menu options for meat industry objects such as lamb carcasses, beef sides and cartoned product.
- Calculate product temperature profiles and heat loads
- Predict bacterial growth during product cooling or heating
- Easily graph or tabulate any of the calculated results.

Food Product Modeller Version 2 is a user-friendly program that enables food industry engineers to design and evaluate chilling, freezing, thawing and heating processes for almost any food product - whether fish, dairy, fruit, vegetable, meat or processed foods. This newly (2002) released version is 32 bit compatible and has enhanced data handling and visualisation features.



Easy-to-use Windows™ compatible interface

Choice of simplified or comprehensive data entry

Easy generation of graphs and tables

Contact:
 Robert Kemp DDI: +64 7 838 5237
 AgResearch MIRINZ Centre
 Private Bag 3123, Hamilton 2020, New Zealand
 Tel: +64 7 856 2836 Fax: +64 7 838 5625
 Email: mirinz@agresearch.co.nz
 Website: agresearch.co.nz/fst

The Food Product Modeller was developed by the AgResearch MIRINZ Centre under contract to Meat New Zealand and Meat & Livestock Australia





Features

Features:

- Easy data entry with sensible defaults
- Attractive Windows™ interface
- Extensive on-line help and thorough documentation
- Inbuilt guidelines for food thermal properties and heat transfer coefficients
- Ability to handle most food products
- On-going backup and support.

Food Product Modeller will help you determine chilling, freezing, thawing or heating process requirements for your products. Food Product Modeller contains useful options for meat, but it can be used for a wide range of food products and other materials. To order, simply complete the enclosed form and return. We recommend that you keep a copy for your own records.

